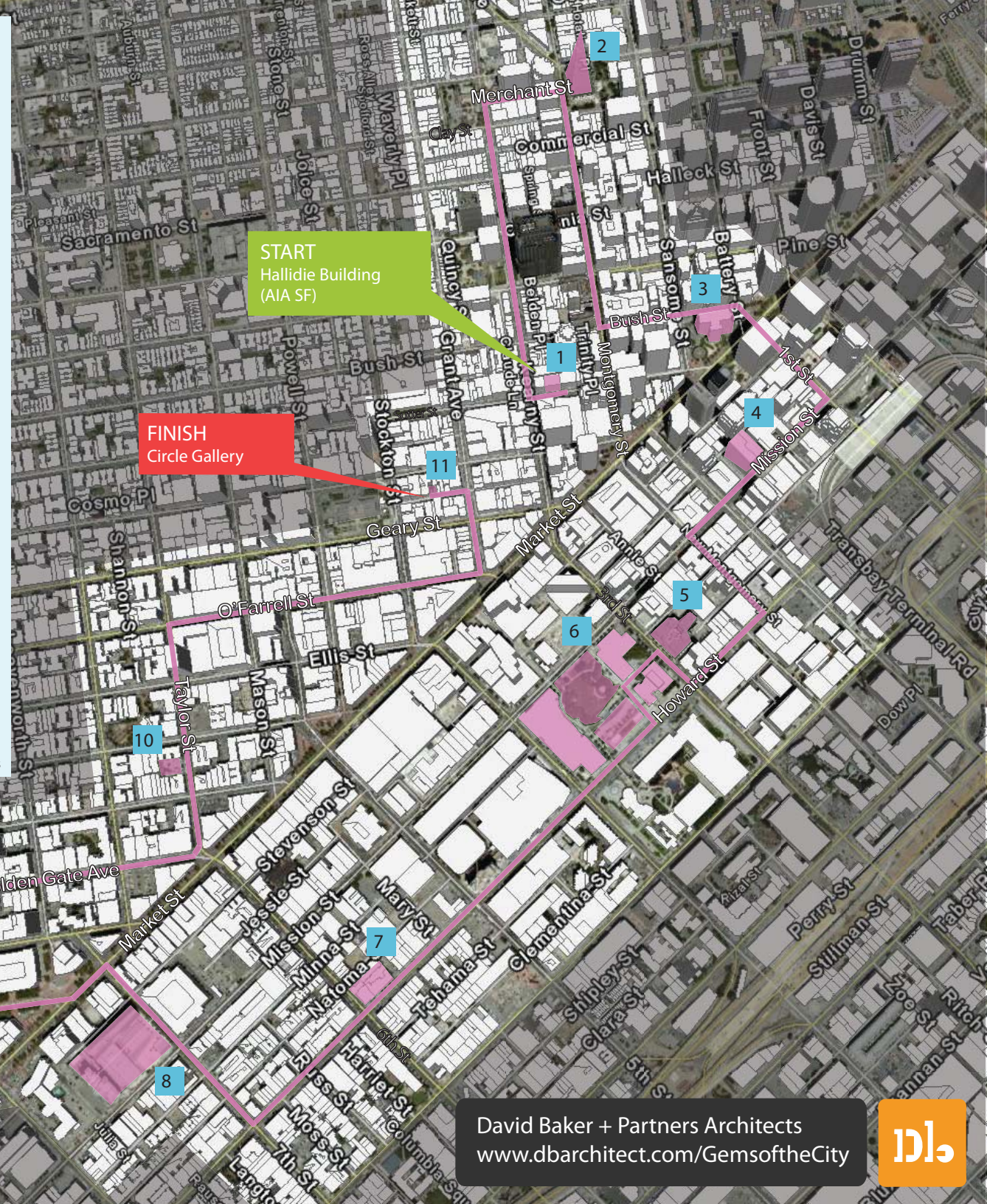


Gems of the City Bike Tour

A bike tour of 11 of the 25 "Gems of the City" as selected by the AIA San Francisco.

- 1 Hallidie Building, 130 Sutter Street (Willis Polk, 1917)
- 2 Transamerica Pyramid, 600 Montgomery Street (William Pereira, 1972)
- 3 1 Bush Street, (Skidmore Owings + Merrill and Hertzka + Knowles, 1959)
- 4 JPMorgan Chase Building, 560 Mission Street (Cesar Pelli, 2002)
- 5 San Francisco Museum of Modern Art, 151 Third Street (Mario Botta and Hellmuth, Obata + Kassabaum, 1995)
- 6 Yerba Buena Center for the Arts, Third + Mission streets (Fumihiko Maki, 1994); Yerba Buena Center for the Arts Theater (James Stewart Polshek, 1994); Metreon (SMWM and Gary Handel + Associates, 1999)
- 7 Plaza Apartments, Sixth + Howard streets (Leddy Maytum Stacy Architects and Paulett Taggart Architects, 2006)
- 8 San Francisco Federal Building, 90 Seventh Street (Morphosis/Smith Group, 2007)
- 9 City Hall, Civic Center, Larkin + Grove streets (Bakewell + Brown, 1915)
- 10 Curran House, 145 Taylor Street (David Baker + Partners, Architects, 2005)
- 11 Xanadu Gallery, 140 Maiden Lane (Frank Lloyd Wright, 1948)

© 2009 David Baker + Partners



START
Hallidie Building
(AIA SF)

FINISH
Circle Gallery

